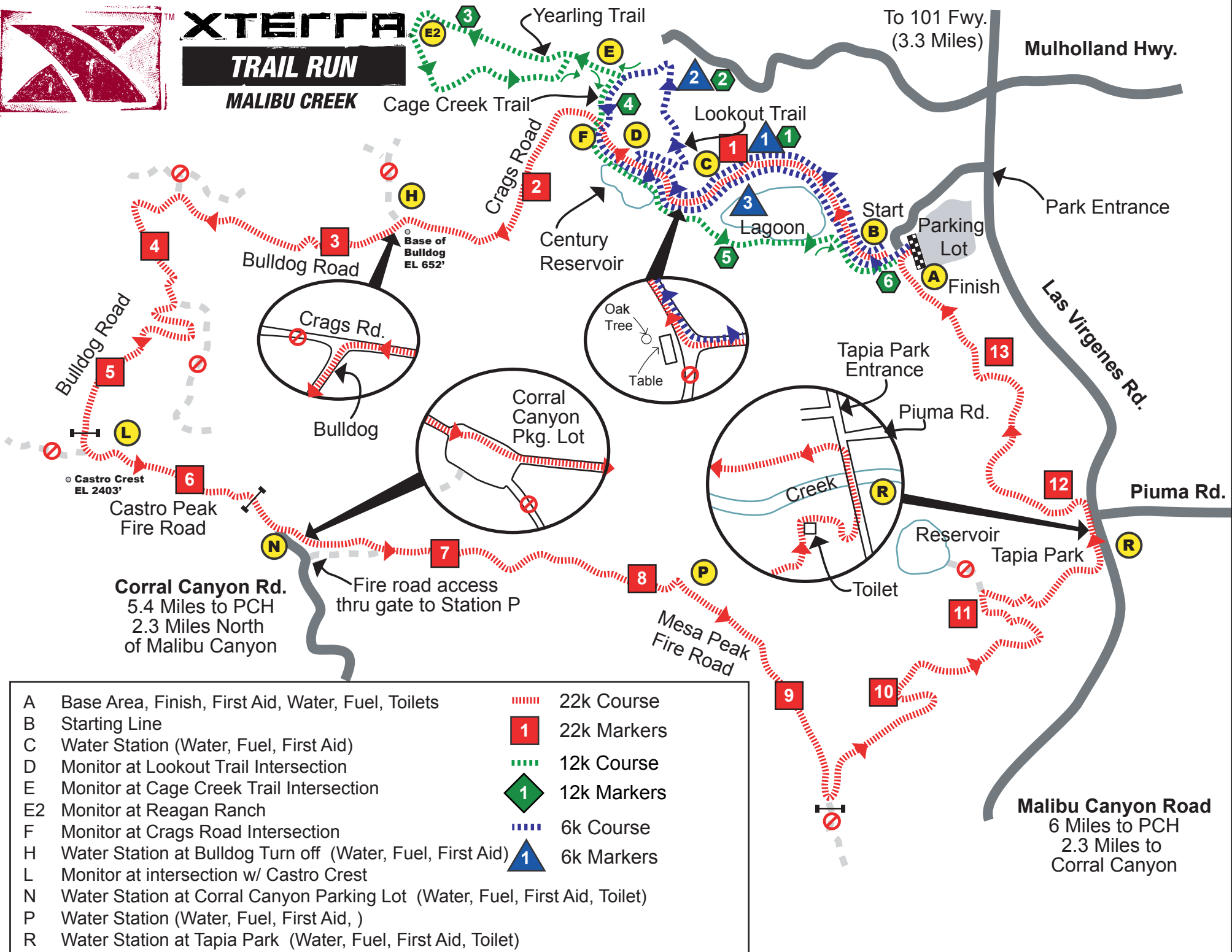




Xterra

TRAIL RUN

MALIBU CREEK



- | | | | |
|----|---|--|-------------|
| A | Base Area, Finish, First Aid, Water, Fuel, Toilets | | 22k Course |
| B | Starting Line | | 22k Markers |
| C | Water Station (Water, Fuel, First Aid) | | 12k Course |
| D | Monitor at Lookout Trail Intersection | | 12k Markers |
| E | Monitor at Cage Creek Trail Intersection | | 6k Course |
| E2 | Monitor at Reagan Ranch | | 6k Markers |
| F | Monitor at Crags Road Intersection | | |
| H | Water Station at Bulldog Turn off (Water, Fuel, First Aid) | | |
| L | Monitor at intersection w/ Castro Crest | | |
| N | Water Station at Corral Canyon Parking Lot (Water, Fuel, First Aid, Toilet) | | |
| P | Water Station (Water, Fuel, First Aid,) | | |
| R | Water Station at Tapia Park (Water, Fuel, First Aid, Toilet) | | |

Malibu Canyon Road
6 Miles to PCH
2.3 Miles to Corral Canyon